



Excellence in English Language Teaching
for students aged 13 - 17





Why choose Severnvale Academy?

Dedicated English tuition from teachers with experience in working with young adults

We offer:

- Informative, active and fun lessons, helping you to improve your English in a short space of time
- Small class sizes, a maximum of 12 students in each class
- Individual attention and guidance
- The opportunity to meet, study and socialise with other young adults from all over the world
- Homestay accommodation, discover English culture and traditions

We guarantee that:

- The international mix of students helps to ensure that English is spoken at all times
- Different tutors teach throughout the day to ensure variety and interest
- There is a focus on “functional” language, improving reading, writing, listening and speaking skills
- Homework is regularly given and marked

Academy information

- Established over 35 years ago
- Family-run, placing emphasis on personal welfare and safety
- Academic campus in Shrewsbury town centre
- Recently renovated facilities, with modern classrooms, large assembly hall, cafeteria, “chill-out” zone, outside terrace,
- Well-organised, fun and varied social programme
- Severnvale private shuttle buses to and from the Academy each day



Course Information

- Students between 13 – 17 years old
- All levels of language welcome from Beginner to Advanced
- 6 week course in July and August (minimum stay of 2 weeks)
- 3 courses: “Starline” (moderate intensity), “Express” (higher intensity with grammar) or “IELTS Accelerator” (higher intensity with grammar and IELTS preparation)
- Lessons specifically designed to improve speaking, listening, reading and writing skills
- Full social and activity programme included

STARLINE COURSE

- 20 lessons (15 hours) per week
- Ages 13-16 years
- Suitable for all levels of English (Beginner to Advanced)

EXPRESS COURSE

- 28 lessons (21 hours) per week
- Ages 15-17 years
- Suitable for all levels of English (Beginner to Advanced)

IELTS ACCELERATOR COURSE

- 28 lessons (21 hours) per week
- Ages 16-17 years
- Minimum level B1 required

Which course is right for me?	STARLINE COURSE 13 – 16	EXPRESS COURSE 15 – 17	IELTS COURSE 16 – 17
Arrival test and appropriate group allocation	✓	✓	✓
20 x General English lessons	✓	✓	✓
4 x Intensive Grammar and Practice lessons	✗	✓	✓
4 x “active communication” and “use of English” lessons	✗	✓	✗
4 x IELTS Preparation lessons	✗	✗	✓
Final certificate of level and progress	✓	✓	✓
Awards and prize-giving ceremony	✓	✓	✓
ALL entrance fees and travel for Severnvale excursions and activities included	✓	✓	✓
24 hour emergency telephone contact	✓	✓	✓
Free private Severnvale buses to and from the Academy	✓	✓	✓



Example timetable (students select Starline, Express or IELTS Accelerator)

Day	Morning	Afternoon	Evening
Mon	TUITION (5x 45 minute lessons)	STARLINE Blists Hill and The Iron Bridge. See the world's first Iron Bridge and experience life 100 years ago in the recreated Victorian village	DISCO
		EXPRESS Afternoon Tuition (4 x 45 minute lessons) <i>Intensive Grammar/Active Communication</i>	
		IELTS ACCELERATOR Afternoon Tuition (4 x 45 minute lessons) <i>Intensive Grammar/IELTS Preparation</i>	
Tue	TUITION (5x 45 minute lessons)	Indoor Sports Indoor football, badminton and more	
Wed	MANCHESTER FOOTBALL CLUB tour Old Trafford Football Ground – “The theatre of dreams” and TRAFFORD PARK – one of the leading indoor shopping centres		BARBECUE
Thurs	TUITION (5 x 45 minute lessons)	STARLINE Ice Skating activity afternoon	
		EXPRESS Afternoon Tuition (4 x 45 minute lessons) <i>Intensive Grammar/Active Communication</i>	
		IELTS ACCELERATOR Afternoon Tuition (4 x 45 minute lessons) <i>Intensive Grammar/IELTS Preparation</i>	
Fri	TUITION (5 x 45 minute lessons)	LUDLOW – CASTLE & MARKET one of central England's most beautiful market towns with a wealth of “black and white” buildings; and a fine example of a medieval castle; the castle visit includes the ‘Living History’ tent and a falconry display	Late finish excursion
Sat	CHESTER one of the most historical and beautiful small cities in Britain		
Sun	“Free/relaxation time” spent with host family or meeting friends		



Leisure Programme

We want to make sure our students enjoy their time with us and have fun

We offer:

- Well-organised leisure programmes with a variety of excursions and activities over the 6 week course
- A structured, safety-conscious and supervised timetable with a staff ratio of at least 1 adult per 15-20 students on ALL excursions
- Detailed information about staying safe at a first morning induction
- The opportunity to meet students from around the world, share experiences, memories and make long-lasting friends
- A wide range of excursions to suit all interests, see below: *

Historical and cultural Visits to local areas of interest e.g. Ironbridge, Powis Castle, Stratford-upon-Avon and the market town of Ludlow.

City Sightseeing Trips to nearby major cities e.g. Manchester, Birmingham, Chester and Liverpool.

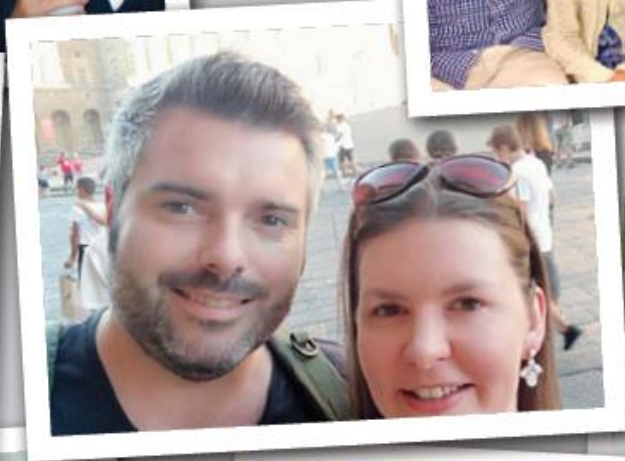
Sports events Include swimming, football, basketball, badminton, table tennis, ten-pin bowling and cricket!

Evening socials Discos and outdoor BBQs.

The countryside and seaside Experience the beautiful coast, beaches and mountains of Wales including Snowdonia and Llandudno.

Other places of interest Adventure parks, football stadiums, zoos, cinema and shopping trips.

* (these are examples only, excursions vary from year to year)



Accommodation – Homestay

Many of our hosts have been working with Severnvale for a number of years

- We work with trustworthy and reliable hosts
- Accommodation is guaranteed to be appropriate for the students' needs, clean and of a high standard

What benefits are there to staying in homestay accommodation

- Being welcomed and included as part of the family throughout their stay
- Being looked after and cared for in a safe and friendly environment
- Experiencing English life, cuisine and culture
- Joining in activities and social events with the host on Sundays and during other “free time”
- Practising English language outside of the classroom in “real-life” situations
- Having a single or shared room (with student of a different nationality)
- Access to a desk/study area
- Allergy/dietary requirements/specific requests are met where possible
- Students receive information about the home and family before arrival
- Daily meals included: Breakfast, packed lunch (Monday – Saturday), Sunday lunch and evening meals
- Laundry included

Accommodation – Residential

Severnvale's junior course is based at Shrewsbury School which offers residential accommodation within the school's boarding houses; with a range of options including single, twin and larger dormitory style bedrooms.

Meals at Shrewsbury are taken in the purpose-built catering hall, where students can choose from a wide variety of foods from the self-service counters. The School's multi-million pound sports complex, offers a wide variety of choice for activities at Shrewsbury School during your stay with us. Alongside games, social space and TV rooms in the Boarding Houses we have other excellent leisure facilities which we are proud to offer.

The residential team are on hand throughout your stay to offer support, advice and daily catch ups to help assist you and feel at home. We are always happy to help and you can look forward to a warm welcome from our team.





Welfare and Safety

We take great care to ensure the welfare and safety of our students at all times

All our staff are qualified, trained and have official clearance to work with junior students



Staff to student ratios are strictly observed at all times, particularly during excursions



Private shuttle bus to and from the Academy included (*homestay only*)



All Severnvaile staff receive activity and excursion training



Specialist external supervision where necessary



Qualified first aiders on site



Self-contained campus ensures that all students are known personally to all staff



Trained staff are available to help at any time

24/7

24 hour/7 day-a-week helpline number to call in cases of emergency

The Town – Shrewsbury

Location

- Shrewsbury is a unique, traditional and historic town, situated in central England
- Within easy access to major international airports and with good transport links
- Small, safe and friendly town with good shopping and leisure facilities
- 100,000 inhabitants
- Green parkland with a river surrounding the town
- The only accredited language school based in Shrewsbury

Nearest Airports to Shrewsbury are Birmingham, Manchester and Liverpool

Taxi transfers from airports to your accommodation are available at an additional cost





Travel times from airports by taxi*

Airport	Code	Travel time
BIRMINGHAM	[BHX]	50 mins
MANCHESTER	[MAN]	70 mins
LIVERPOOL	[LPL]	70 mins
NOTTINGHAM EAST MIDLANDS	[EMA]	90 mins
LONDON LUTON	[LTN]	2 hours
LONDON HEATHROW	[LHR]	2.5 hours
LONDON STANSTED	[STN]	3.25 hours
LONDON GATWICK	[LGW]	3.25 hours

* these journeys times are ONLY a guide and will vary according to time/date of travel

Arrival information

- We will send confirmation information prior to student arrival

Taxi transfers

- We recommend that our students book a taxi transfer with us
- Our taxi driver will meet the arriving student with a sign saying "Severnvale" and the student's name

There is an additional charge (for under 16 year olds) for driver waiting time where airlines request that the driver stays at the airport until the flight has departed.



"A great school with professional teachers!!!!!!"

Christian

"I did a CPE preparation course here and got 215/230 points, what else can I say... The teachers are very friendly and helpful and help create a great learning atmosphere which is benefitted by the small classes. The administrative team also does a great job in providing housing and solving everyday problems. I'm glad I spent a month in Shrewsbury!"

Meinrad

"I really really enjoyed my 3 weeks at Severnvale Academy... Thank you all for your kindness, your advice... When I arrived, I was ashamed to speak English and now it's different. I didn't reach my aim to dream in English but I am proud of myself. I improved my English. If I had more time, I would have stayed a few more weeks. I met some people from different countries and it's very interesting to discover their culture, sometimes it wasn't easy to understand them with their accent. I'm sure to keep in touch with some of them including my host family. She is a lovely person and we had a great time together."

Alexandra

"My experience in Severnvale is one of the best memories. Thank you, all the teachers, my groupmates and my host families!"

Natasha

"The best experience of my life! Excellent school and good teachers in a lovely atmosphere! A full immersion in the British culture and a perfect school to improve your English level... I recommend Severnvale Academy to everybody."

Cristianna

"To be honest - it wasn't my idea to spend my holidays in an English school, and even not in January. But in the end I must confess that these three weeks had been one of the best in my life! The teachers are outstanding and the admin staff are first class! It's a really great place to learn and speak the language."

Chris



Severnvale Academy

25 Claremont Hill, Shrewsbury, Shropshire SY1 1RD England

Telephone: **+44 (0)1743 232505**

Web: **www.severnvale.co.uk** Email: **enquiry@severnvale.co.uk**

Accredited by the



for the teaching
of English in the UK